

transfinder



Countdown to Reopening

**Expert Insights on Preparing for the Future
*While Dealing with Uncertainty V***

This presentation is proprietary and confidential information of Transfinder Corporation. It is not intended to be distributed to any third party without the written consent of Transfinder.

Welcome

- Welcome
- Introduction of Panelists by Rick D'Errico, moderator
- Panel Discussion/Q&A

transfinder



Discussion Panel



Nancy Clavette

Dispatcher

Oyster River Cooperative School
District, Durham, NH

Steve Lake

Transportation Director

Southwest Allen County Schools
Fort Wayne, Ind.



Lisa Huppe

Transportation Director

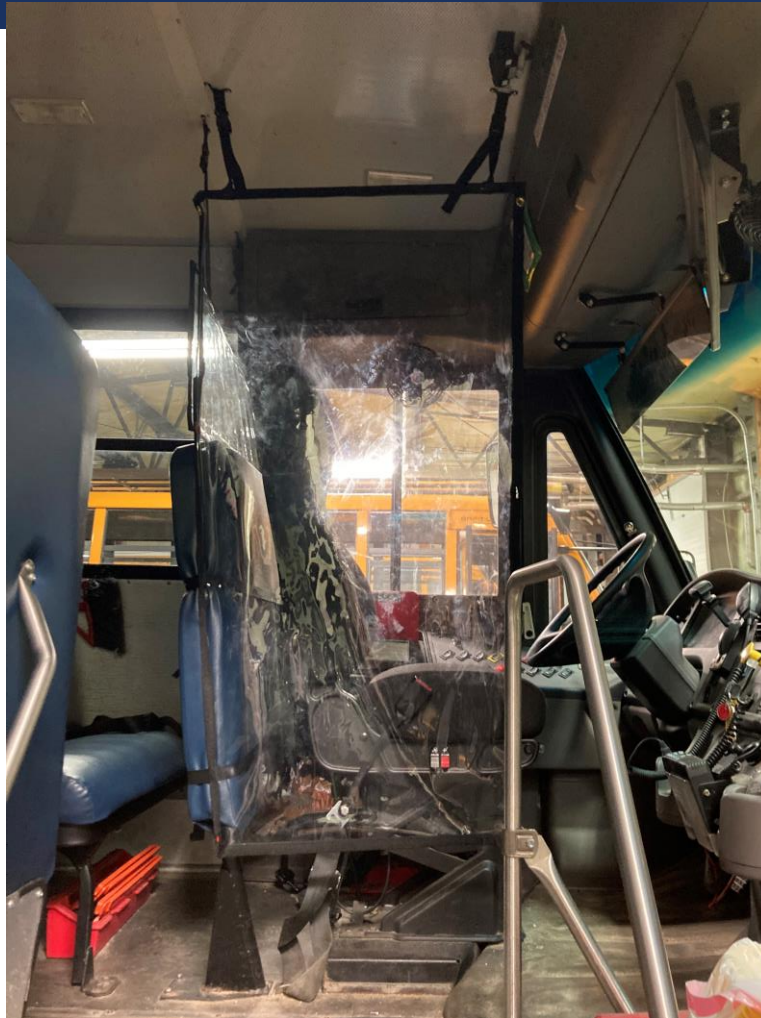
Oyster River Cooperative
School District, Durham, NH

Rick D'Errico

Moderator

Transfinder

Barriers



This presentation is proprietary and confidential information of Transfinder Corporation. It is not intended to be distributed to any third party without the written consent of Transfinder.

Discussion Panel



Nancy Clavette

Dispatcher

Oyster River Cooperative School
District, Durham, NH

Steve Lake

Transportation Director

Southwest Allen County Schools
Fort Wayne, Ind.



Lisa Huppe

Transportation Director

Oyster River Cooperative
School District, Durham, NH

Rick D'Errico

Moderator

Transfinder

Do you have a story?

mystory@transfinder.com

See You Next Week!

transfinder



*See you next
week!*

Tune in next Tuesday, Aug. 18, for our next
“Best Practices” webinar

Visit [Transfinder.com](https://www.transfinder.com) to register

This presentation is proprietary and confidential information of Transfinder Corporation. It is not intended to be distributed to any third party without the written consent of Transfinder.