

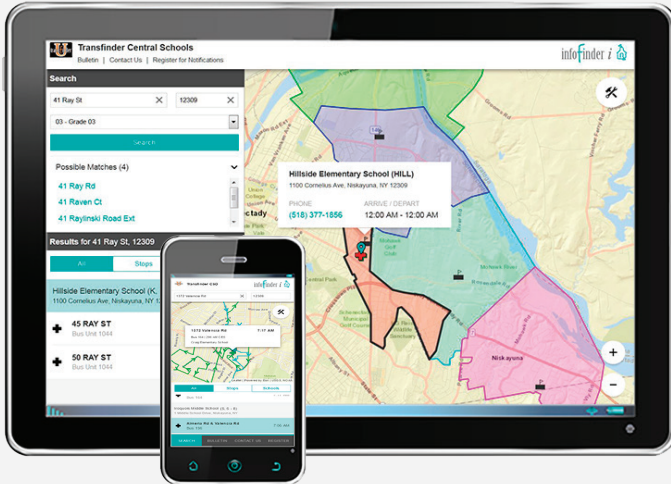


INFOFINDER *i*

KEEPING THE COMMUNITY INFORMED

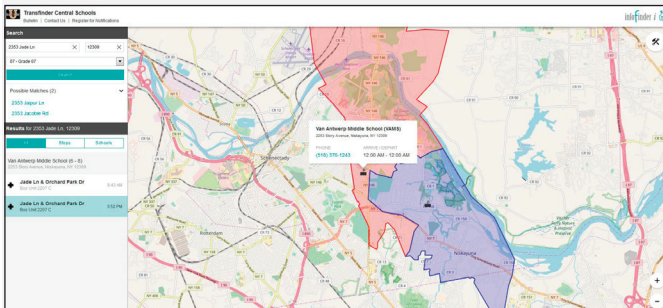


THE ENHANCED INFOFINDER *i* IS YOUR TRANSPORTATION DEPARTMENT'S LINK TO THE COMMUNITY. INFOFINDER *i* IS A WEB-BASED SERVICE FROM TRANSFINDER THAT LEVERAGES YOUR INVESTMENT IN ROUTEFINDER PRO TO SHARE INFORMATION VIA YOUR DISTRICT'S WEBSITE.



Mobile Friendly with Enhanced Search Features

Quick access to comprehensive information from any tablet, phone or PC. District personnel can answer questions on each student related to school, bus number, driver, and pick up and drop off locations and times.



Now Featuring School Boundaries

With newly added Map Tools, users can see **School Boundaries** configured in Routefinder Pro and search results can be displayed on any one of 12 basemaps, including Imagery, Streets, Terrain and more. Administrators have the ability to turn school boundaries on or off.

Enhanced Mapping Display

By entering a student's address, parents and district personnel have access to an interactive map of all available trip stops, trips and schools a student is eligible for.

Users can pan and zoom the high-resolution map, and choose from 12 best-in-class ESRI map displays to view the areas surrounding stop locations.

Informing Parents and the Community

Parents can:

- Enter their address to:
 - Locate and view which school their child would attend if they move to or around the school district;
 - Find their child's next school as they advance in grade;
 - Find their child's designated bus stop; and
 - Visualize the route their child's bus will be taking to and from school.
- View school boundary maps to better understand school attendance redistricting plans;
- Sign up online for automatic notifications, and submit questions and concerns.

Districts can:

- Significantly reduce phone inquiries and complaints from parents;
- Centralize and maintain consistency in their transportation information;
- Provide easy data access for all involved with the district;
- Share school boundary maps with the community and district staff and administration; and
- Provide unlimited electronic notification at no additional cost.

How it Works:

Transfinder hosts your Infofinder *i*, enabling you to:

- Easily upload your data to our secure server from Routefinder Pro;
- Seamlessly integrate transportation information and notification capability into your district website; and
- Share information with users across multiple platforms including PCs, tablets and smart phones.

