



**GPS
CONNECT**

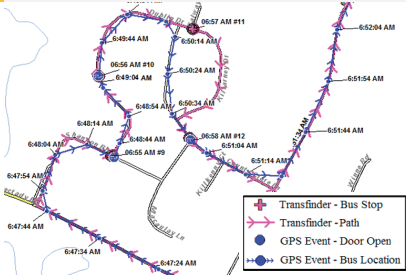


GPS CONNECT

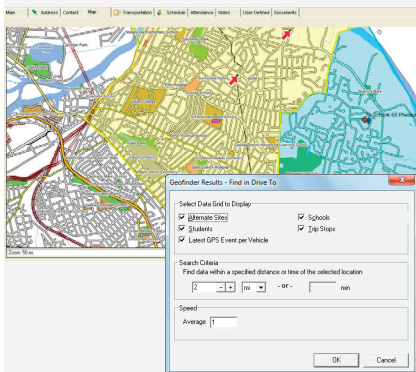
BENEFIT FROM SEAMLESS GPS INTEGRATION



USE GPS CONNECT TO IMPORT GPS DATA INTO YOUR TRANSPORTATION MANAGEMENT SOLUTION FROM TRANSFINDER. IMPROVE OPERATIONAL EFFICIENCIES, REDUCE COSTS, AND PROVIDE SAFER TRANSPORTATION FOR STUDENTS.



The Pink Line is the planned route and the Blue Dots represent the actual driving path. By overlaying the two sets, you have a better understanding of your planned versus actual routes. You can quickly make adjustments based on a case-by-case basis to create more efficient, safer routing scenarios.



Utilizing the **Geofinder** tool enables users to select an area on a map and identify GPS-enabled vehicles within that specified area. Users can contact and warn vehicles of issues, or dangerous conditions or come to the aid of a disabled vehicle within the identified area.

GPS Connect provides your district with an analytical tool beyond compare. Only Transfinder's mapping technology can harness the power of real world latitude and longitude coordinates. While in routing mode, GPS Connect displays real-time or historical GPS data simultaneously with planned route data on the same map.

With GPS Connect, you can enable GPS data to...

- Compare actual data with planned routes to make key managerial decisions;
- Maintain maps using GPS data points even before your county maps are updated;
- Easily analyze and adjust driving paths and stop times;
- Track and improve driver behavior;
- Receive alerts by e-mail or on-screen if a bus is speeding, off-path, or early/late to a scheduled stop;
- Reduce your district's carbon footprint by monitoring idle times;
- Increase overall fuel efficiency and reduce costs;
- Create trips from GPS events – Implement and modify routes in less time, and
- Analyze data and trends with reports.

Integrate With Leading GPS Vendors

GPS Connect can read GPS data from hardware units supplied by leading GPS vendors. By integrating GPS, you can more easily and accurately map bus routes, track driver habits, verify schedules, map new housing developments, or accommodate road construction.

GPS Connect offers support for multiple vendors and multiple accounts – districts that have more than one account with one or more vendors can configure GPS Connect to show all vehicles across all accounts.

Monitor Your Operation More Closely

With your GPS information, you can add and edit streets, create or modify bus routes, and/or reposition stops.

You also can see an alternative route taken by a driver based on actual (and sometimes unplanned) driving conditions. This enables you to adjust driving paths and alert students and parents to adjustments.

With GPS Connect, you can establish a series of alerts to track variances in paths, speed, and time. If anything out of the ordinary happens, GPS Connect will keep you informed via electronic notification — wherever you are and whatever you are doing.

You can set parameters for notifications based on a variety of driving rules important to your particular district. For example, you can see how far away from a planned stop the bus actually stopped; see if it was early or late to the stop; or missed a stop; and receive an alert if the travel speed exceeded 10 miles or more above the posted speed limit.

GPS Connect includes reports that indicate route deviations, such as unplanned or missed stops, enabling you to share this information with drivers to remedy deviations.

If you are considering GPS, our Implementation and Training staff will help you benefit immediately from your investment in GPS Connect by helping you to get up and running in a timely manner.