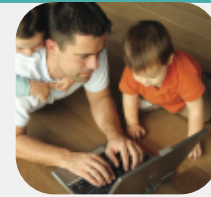


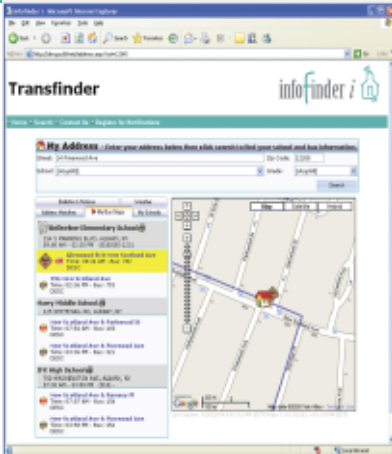


▶▶▶ INFOFINDER *i*

KEEPING THE COMMUNITY INFORMED



INFOFINDER *i* IS YOUR TRANSPORTATION DEPARTMENT'S LINK TO THE COMMUNITY. INFOFINDER *i* IS A WEB-BASED SERVICE FROM TRANSFINDER THAT LEVERAGES YOUR INVESTMENT IN ROUTEFINDER PRO TO SHARE INFORMATION VIA YOUR DISTRICT'S WEBSITE.



After entering an address, Infofinder *i* displays all the schools, bus stops and routes on a detailed map. The map clearly identifies the household, schools and bus stop locations for parents and guardians to view on your district's website.

"Infofinder *i* has drastically reduced the amount of calls to the transportation department. It gives parents a tool they've never had before, providing peace of mind that their children are going to the right stop at the right time."

CHRIS PINKNEY
TRANSPORTATION COORDINATOR
FARGO PUBLIC SCHOOLS
FARGO, ND

Transfinder hosts your **Infofinder *i***, enabling you to:

- Easily upload data to our secure server through an easy-to-use Routefinder Pro module;
- Seamlessly integrate transportation information and notification capability into your district website;
- Allow parents and guardians the ability to view their address and bus route on a map as well as a listing of bus stops that serve them;
- Reduce calls and complaints to your transportation department;
- Instantly inform parents and guardians with email notifications.

With Infofinder *i*'s notification system, parents can register to receive important notices related to schedule, stop or vehicle changes. You create the message, you decide when to send it, and we do the rest. Emails contain your message and helpful links that show the student's mapped household and stop information.

Parents can:

- Find their child's designated bus stop;
- Locate which school their child would attend if they are planning to move;
- Visualize the route their child's bus will be taking to and from school;
- Sign up online for automatic notifications, and submit questions and concerns.

Districts can:

- Provide unlimited electronic notification at no additional cost;
- Centralize and maintain consistency in transportation information;
- Provide easy access for all involved with the district;
- Significantly reduce phone inquiries and complaints.

You are in control

Infofinder *i* is fully configurable from your desktop. You decide if you want to show stop times, bus routes, bus names, am/pm trips...it is in your control. You select the data that is displayed on your site.

Only your district maps, schools, routes and stops are uploaded to our servers. At no time do we store or display any student-related data. You control your data and decide which information you will provide to the community.

You provide the data, we do the rest

Since Infofinder *i* is a service, all you have to do is upload your data to our secure Infofinder *i* server, add some simple links to your existing website, and we do the rest.

