



## Transfinder Professional Services

*Expert Support That Helps Districts Do More With Less*

Our services fall into four core areas:

- ✓ Implementation Routing
- ✓ Efficiency Routing
- ✓ Analysis & Reports
- ✓ General Online Consulting

Each engagement is tailored to the district's needs, timeline, and internal capacity.



Transfinder's Professional Services team partners with school districts across North America to solve complex transportation challenges. From launching new routing systems to optimizing efficiency, analyzing operations, and providing on demand expertise, our experienced consultants help districts improve service, reduce costs, and operate with confidence.

## Implementation Routing

### Start Strong With Expert Built Routes

**Implementation Routing** is designed for districts that are new to Transfinder — or returning after time away — and need a fast, accurate way to get routes built without overwhelming staff.

Transportation departments are busy keeping buses on the road. Asking staff to rebuild



routes while learning new software is a heavy lift. Our Professional Services team removes that burden by building routes for you, using your existing information.

### How it works:

- Districts provide existing route sheets, maps, spreadsheets, or exports from other systems
- Our experienced routers transcribe and configure routes directly in Routefinder PLUS
- Stops, timing, tiering, and boundaries are set up using industry best practices

### Why districts choose Implementation Routing:

- Speeds time to go live
- Reduces disruption during system transitions
- Ensures routes are built correctly from day one
- Provides a strong foundation for future optimization

This service is ideal for new clients, districts facing staffing shortages, or teams that have reverted to paper and need help getting back on track.

## Efficiency Routing

### Reduce Costs by Routing to Reality

**Efficiency Routing** helps districts find meaningful savings by improving how routes are designed and how resources are deployed.



Rather than focusing only on minor time or mileage adjustments, our approach targets the biggest cost driver in pupil transportation: the number of buses required to operate daily service.

When available, we incorporate actual ridership data — not just eligibility — to design routes based on how students really ride.

### What we do:

- Remove unused or underutilized stops
- Consolidate service areas
- Adjust routes based on real ridership patterns
- Reduce the total number of buses required

### Why ridership matters

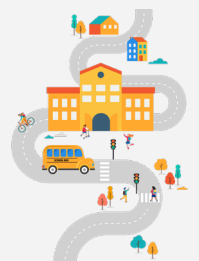
Across North America, districts commonly see:

- 80% of eligible elementary students riding
- 70% at the middle school level
- 50–60% at the high school level

Routing to actual ridership — rather than theoretical capacity — often unlocks the largest efficiency gains.

### Results districts care about:

- Fewer buses on the road
- Lower labor, fuel, and maintenance costs
- Improved fleet utilization
- Sustainable long term savings



## Analysis & Reports

### Insight, Strategy, and Data Driven Decisions

Some districts want change. Others want clarity. Our **Analysis & Reports** services provide both — without requiring districts to immediately alter their routes.



These studies give leaders a third party, expert view of current operations and future options.

### Routing Efficiency Reports

An objective evaluation of how well a district is routing today, without making direct changes. Ideal for benchmarking performance or supporting budget and planning discussions.

### Bell Time Studies

Scenario based analyses showing how changes to school start times affect:

- Number of buses required
- Tiering strategies
- Operational efficiency

These studies are especially valuable as districts explore later start times for secondary students.

### Operations Reviews

A comprehensive review that combines data analysis with on site observations, including:

- Routing efficiency
- Bell times and tiering
- Day to day operational practices

## Demographic & Boundary Studies

Also known as school boundary analysis, these projects use enrollment and demographic data to:

- Forecast student population changes
- Evaluate building utilization
- Recommend boundary adjustments to balance enrollment

This service supports both transportation efficiency and long range academic planning.

## General Online Consulting

### Expert Help When and Where You Need It

**General Online Consulting** provides flexible, on demand support for districts that need extra capacity or specialized expertise.

**This is often used when:**

- A district loses a router or key staff member
- Major routing changes need to be completed quickly
- Staff want help building forms, dashboards, or reports
- Teams need expert guidance without a long term project

**Examples of common requests:**

- Temporary routing assistance during staffing transitions
- Student bus registration form creation
- Custom reports and dashboards
- Data cleanup and system configuration
- General routing and software support



Think of this as an extension of your team — available when you need help, without adding permanent staff.



The result is a set of actionable recommendations grounded in both data and real world experience.

## Why Transfinder Professional Services

### Experience You Can Rely On

Our consultants aren't just software experts — they're experienced transportation professionals who understand real district challenges.



### By partnering with Transfinder Professional Services, districts gain:

- Proven expertise built across hundreds of projects
- Faster results with less internal strain
- Confidence that work is done correctly the first time
- A trusted partner invested in long term success
- Nearly four decades of expertise keeping children safe and districts efficient

Whether you're launching new software, optimizing routes, analyzing operations, or filling short term gaps, Transfinder Professional Services helps districts move forward with clarity and confidence.



"[Each Professional Services' transportation study] verifies what we already know and what we tell leadership. It's good to have that validation from an outside source. To have [Transfinder] do this study, to put the time in and to verify what we probably already know makes a big difference. We're trying to do everything as efficiently as possible and you help with that."

**John Lambusta** - *transportation director*  
Williamsburg-James City County Public Schools, VA

Williamsburg-James City County Public Schools transporting 11,000 students with 160 buses - turned to Transfinder's Professional Services three times to conduct transportation studies.



"I do recommend reaching out to Professional Services. They'll dive deep into what you're currently doing. They'll look at what you have in place. They'll break it down and give you recommendations. It helps you just to have those outside eyes into what you're doing and making sure you're doing the best job you possibly can for your district."

**Dennis Grey** - *transportation coordinator*  
Walton County School District, FL

Walton County School District transports 6,000 students a day; 75 routes; 150 buses in fleet; and 105 drivers.



### To learn more...

Please call **800.373.3609**, email [solutions@transfinder.com](mailto:solutions@transfinder.com), visit [www.transfinder.com](http://www.transfinder.com) or scan the QR code to learn more.



SCHENECTADY, NEW YORK 12305  
800.373.3609 | [SOLUTIONS@TRANSFINDER.COM](mailto:SOLUTIONS@TRANSFINDER.COM)



[WWW.TRANSFINDER.COM](http://WWW.TRANSFINDER.COM)